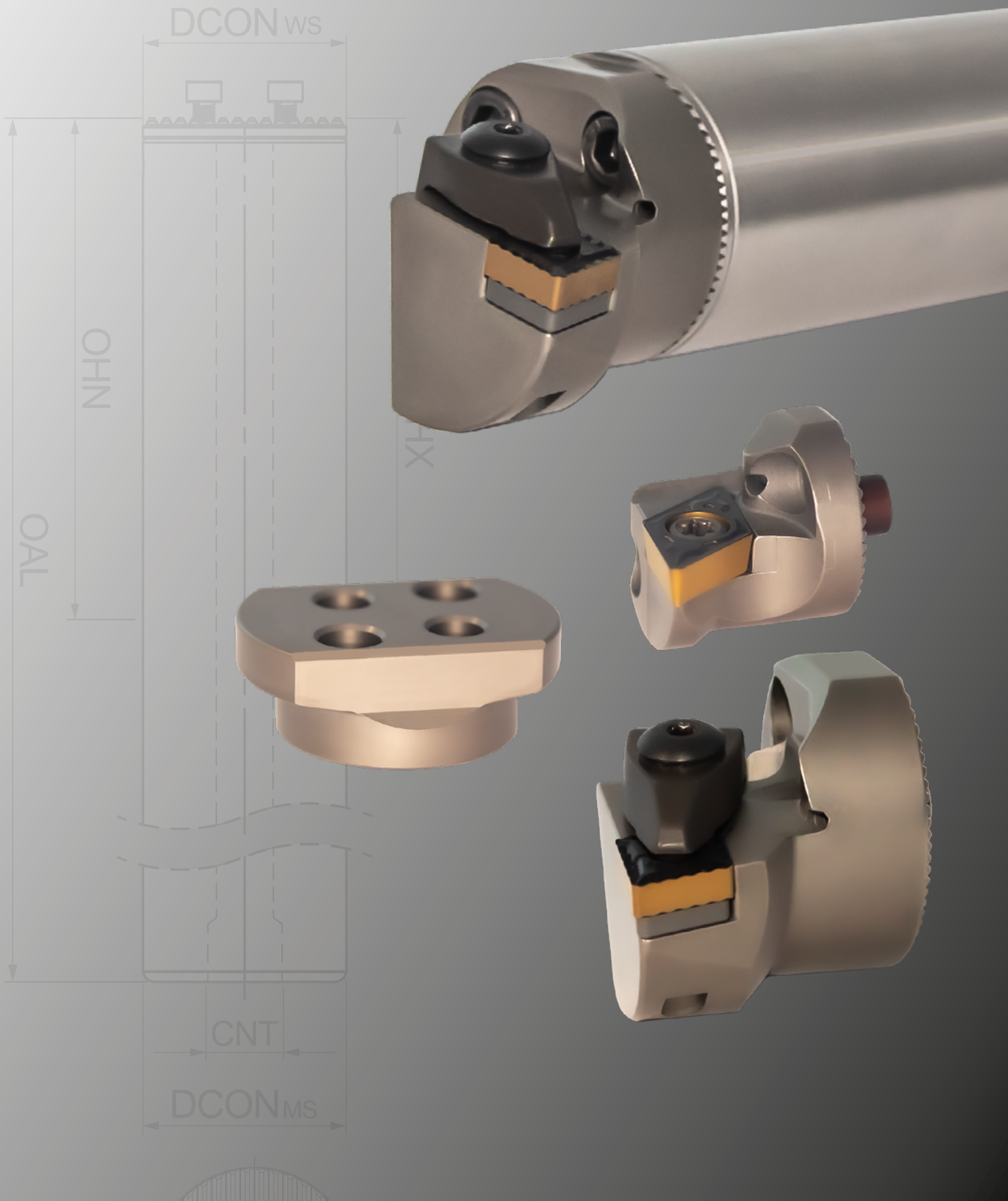


ANTI-VIBRATION BORING QuietBore

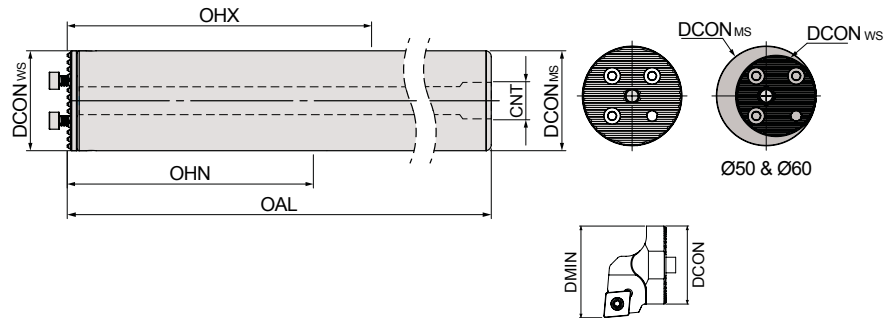
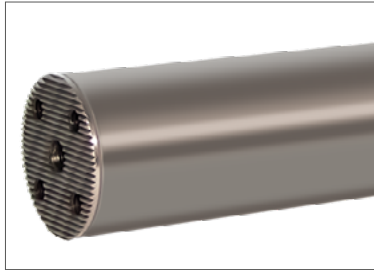


ANTI-VIBRATION TOOLS

QuietBore

AVB.

For all AVH heads

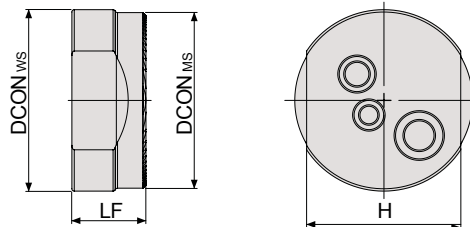


EDP Code	Description	DCON _{ms}	DCON _{ws}	OAL	OHN	OHX	CNT	DCON	DMIN	Screw	Key
AVT0143	AVB.161567D	16	16	156	55	92	G1/8	16	20	M3X10IMB	HA2.5
AVT0144	AVB.1620410D	16	16	204	96	140	G1/8	16	20	M3X10IMB	HA2.5
AVT0145	AVB.202007D	20	20	200	70	120	G1/4	20	25	M3.5X10IMB	HA2.5
AVT0146	AVB.2026010D	20	20	260	120	180	G1/4	20	25	M3.5X10IMB	HA2.5
AVT0147	AVB.252557D	25	25	255	88	158	G1/4	25	32	M4X12IMB	HA3
AVT0148	AVB.2533010D	25	25	330	155	230	G1/4	25	32	M4X12IMB	HA3
AVT0149	AVB.323207D	32	32	320	100	192	G3/8	32	40	M5X16IMB	HA4
AVT0150	AVB.3241610D	32	32	416	192	288	G3/8	32	40	M5X16IMB	HA4
AVT0151	AVB.404087D	40	40	408	128	248	G1/2	40	50	M6X16IMB	HA5
AVT0152	AVB.4052810D	40	40	528	248	368	G1/2	40	50	M6X16IMB	HA5
AVT0153	AVB.505197D	50	40	519	168	318	G1/2	40	63	M6X16IMB	HA5
AVT0154	AVB.5066910D	50	40	669	318	468	G1/2	40	63	M6X16IMB	HA5
AVT0155	AVB.606287D	60	40	628	208	388	G3/4	40	80	M6X16IMB	HA5
AVT0156	AVB.6080810D	60	40	808	388	568	G3/4	40	80	M6X16IMB	HA5

For assembly and operating instructions see page 6

AVO.

Precision orientation attachment



EDP Code	Description	DCON _{ms}	DCON _{ws}	LF	H	TO SUIT BAR TYPE
AVT0175	AVO.16-25	28	25	15	22	AVB.16 - AVB.25
AVT0176	AVO.32-60	53	40	20	35	AVB.32 - AVB.60

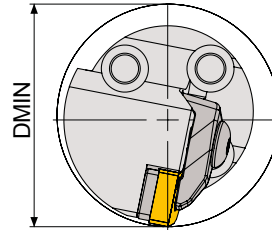
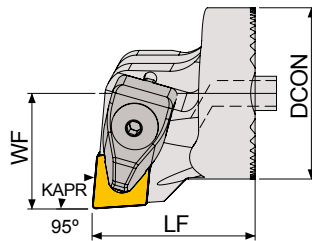
ANTI-VIBRATION TOOLS

QuietBore

AVH..TCLNR/L For CN.. negative inserts



Right hand holder shown



Insert	
	CNGG 1204..
	CNMA 1204..
	CNMG 1204..
	CNMM 1204..

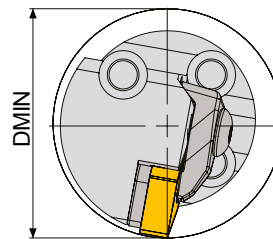
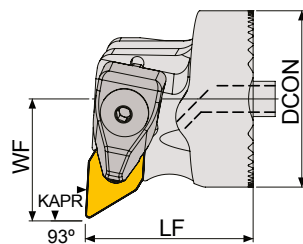
EDP Code	Description		DCON	LF	WF	DMIN	Clamp	Clamp Screw	Shim	Shim Screw	Spring	Washer	Key
AVT0157	AVH.A32 TCLNR 12		32	32	22	40	TTBP-2.1	HMBV6M.1	HPC12NA	HBi5	HCY6.1	TTBR-2	HA3
AVT0158	AVH.A40 TCLNR 12		40	38	27	50							

To order left hand add L to EDP code. Example: AVH.A32 TCLNL 12 = AVT0157L

AVH..TDUNR/L For DN.. negative inserts



Right hand holder shown



Insert	
	DNGG 1506..
	DNMA 1506..
	DNMG 1104.. DNMG 1504.. DNMG 1506..
	DNMM 1506..

EDP Code	Description		DCON	LF	WF	DMIN	Clamp	Clamp Screw	Shim	Shim Screw	Spring	Washer	Key
AVT0159	AVH.A32 TDUNR 11		32	32	22	40	TTBP-1.1	HMBV5M.1	HSD11PA	HBi5.2	HCY6.1	TTBR-2	HA3
AVT0160	AVH.A40 TDUNR 15		40	38	27	50	TTBP-2.1	HMBV6M.1	HPD15NA	HBi5	HCY6.1	TTBR-2	HA3

To order left hand add L to EDP code. Example: AVH.A32 TDUNL 11 = AVT0159L

For DNMG 1504 inserts, order additional shim HPD15XA

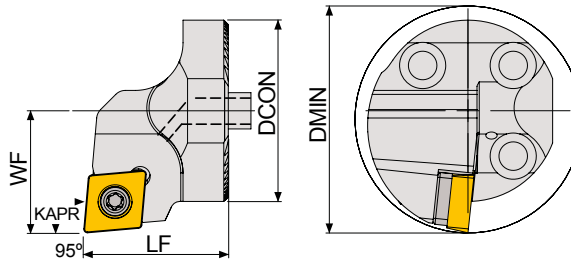
ANTI-VIBRATION TOOLS

QuietBore

AVH..SCLCR/L For CC.. positive inserts



Right hand holder shown



Insert	
	CCGT 0602.. CCGT 09T3.. CCGT 1204..
	CCMT 0602.. CCMT 09T3.. CCMT 1204..

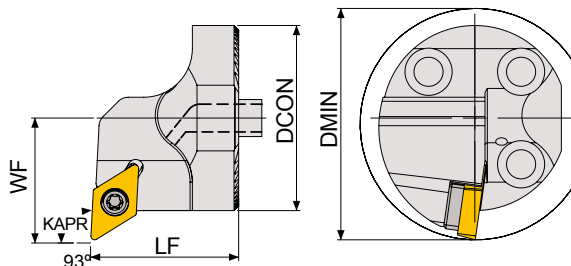
EDP Code	Description	⚡	DCON	LF	WF	DMIN	Shim	Shim Screw	Shim Key	Insert Screw	Wrench
AVT0161	AVH.A16 SCLCR 06	⚡	16	20	11	20	-	-	-	TXS2506	TXW08
AVT0162	AVH.A20 SCLCR 09	⚡	20	20	13	25	-	-	-	TXS3511	TXW15
AVT0163	AVH.A25 SCLCR 09	⚡	25	23	17	32	HSC09PA	HSAV35.1	HA3.5	TXS3512.1	TXW15
AVT0164	AVH.A32 SCLCR 09	⚡	32	32	22	40				TXS3514	
AVT0165	AVH.A40 SCLCR 12	⚡	40	32	27	50	HSC12PA	HSAV45	HA4.5	TXS4516	TXW20F

To order left hand add L to EDP code. Example: AVH.A16 SCLCL 06 = AVT0161L

AVH..SDUCR/L For DC.. positive inserts



Right hand holder shown



Insert	
	DCGT 0702.. DCGT 11T3..
	DCMT 0702.. DCMT 11T3..

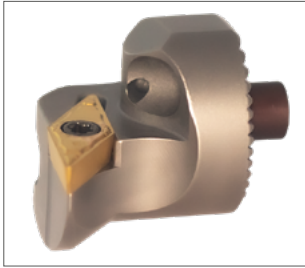
EDP Code	Description	⚡	DCON	LF	WF	DMIN	Shim	Shim Screw	Shim Key	Insert Screw	Wrench
AVT0166	AVH.A16 SDUCR 07	⚡	16	20	11	20	-	-	-	TXS2506	TXW08
AVT0167	AVH.A20 SDUCR 11	⚡	20	20	13	25	-	-	-	TXS3511	TXW15
AVT0168	AVH.A25 SDUCR 11	⚡	25	23	17	32	HSD11PA	HSAV35.1	HA3.5	TXS3512.1	TXW15
AVT0169	AVH.A32 SDUCR 11	⚡	32	32	22	40				TXS3514	
AVT0170	AVH.A40 SDUCR 11	⚡	40	32	27	50	HSD11PA	HSAV35	HA3.5	TXS3514	TXW15

To order left hand add L to EDP code. Example: AVH.A16 SDUCL 07 = AVT0166L

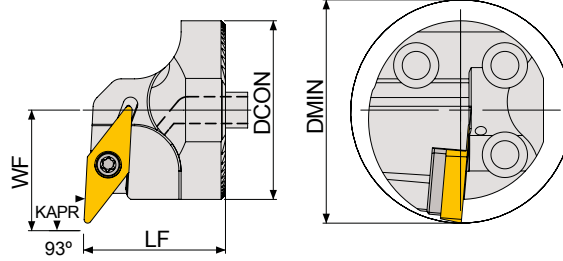
ANTI-VIBRATION TOOLS

QuietBore

AVH..SVUCR/L For VC.. positive inserts



Right hand holder shown



Insert	
	VCMT 1103.. VCMT 1604..
	VCGT 1103.. VCGT 1604..

EDP Code	Description		DCON	LF	WF	DMIN	Shim	Shim Screw	Shim Key	Insert Screw	Wrench
AVT0171	AVH.A20 SVUCR 11	💧	20	20	15	27	-	-	-	TXS2506	TXW08
AVT0172	AVH.A25 SVUCR 11	💧	25	23	17	32	-	-	-	TXS2506	TXW08
AVT0173	AVH.A32 SVUCR 16	💧	32	32	22	40	HSV16PA	HSAV35	HA3.5	TXS3514	TXW15
AVT0174	AVH.A40 SVUCR 16	💧	40	32	27	50					

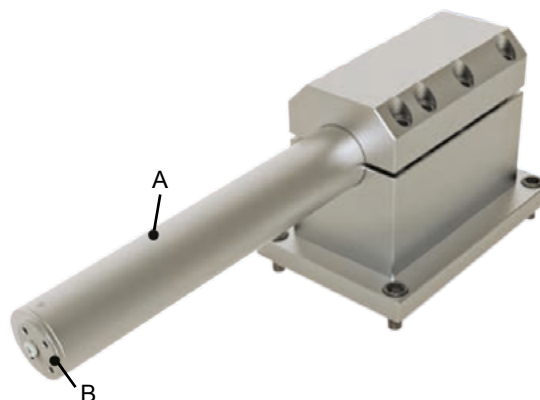
To order left hand add L to EDP code. Example: AVH.A20 SVUCL 11 = AVT0171L

ANTI-VIBRATION TOOLS

QuietBore

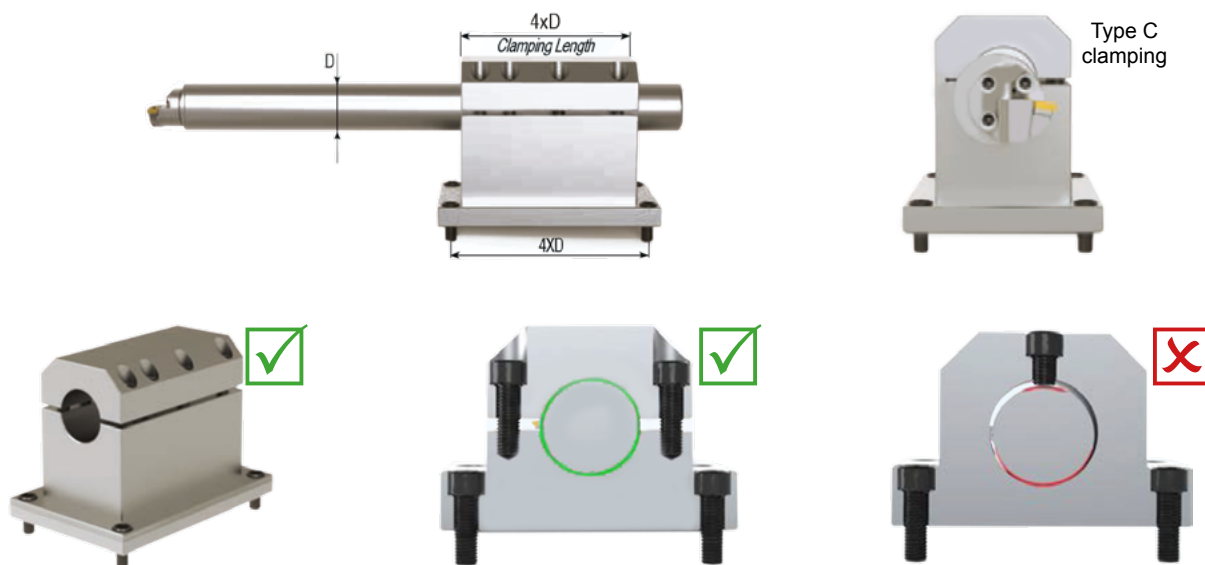
Assembly

The shank and the cartridge mounting surfaces, A and B, in addition to the inside of the holder must be cleaned before assembly.



Mounting

If the available clamping method is less than $4xD$, please ensure that clamp Type C is used. Do not clamp only on the top of the bar. High pressure internal coolant is recommended for all deep bores.



Bar positioning

When mounting the bar for the first time, please use the AVO precision orientation attachment to achieve correct positioning. The orientation must be within 0.01mm tolerance on the X axis direction.

