

HOLDERS FOR AUTOMATIC LATHES

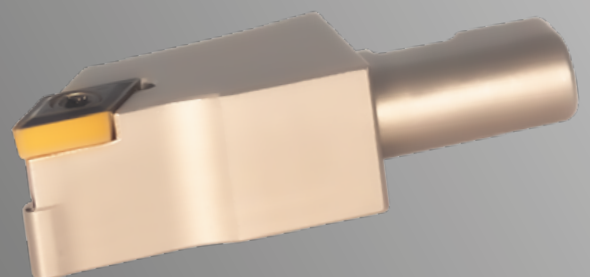
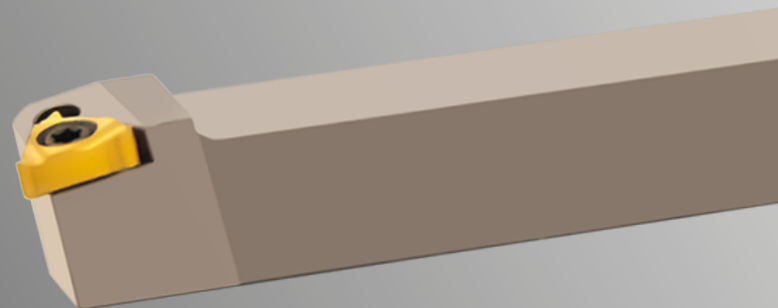
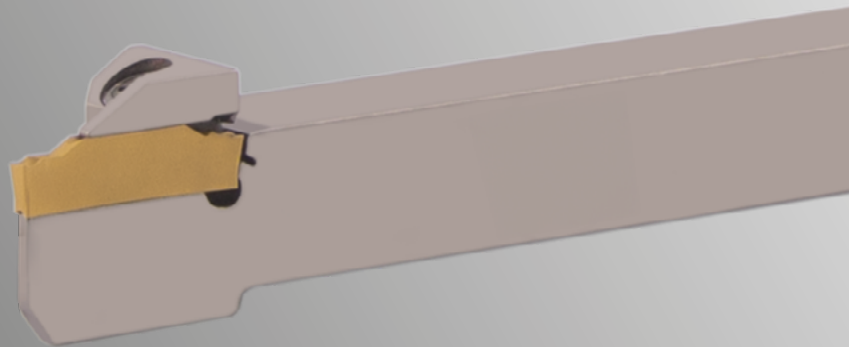
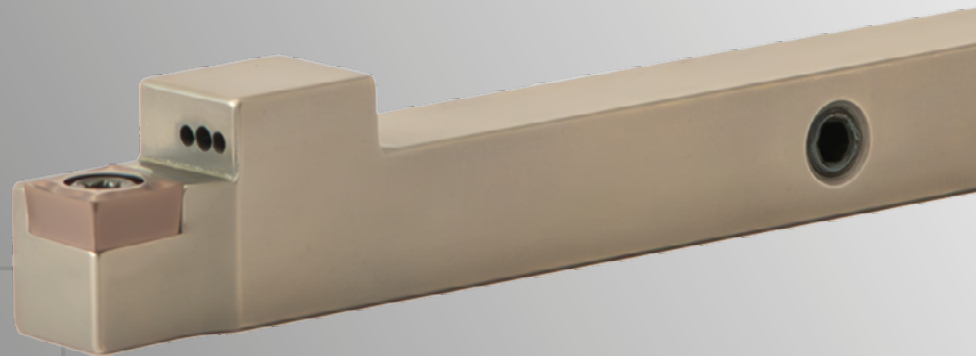
 **EUROPA
TOOL**

 **Clarkson**

Turning Holders P.2 - 9

Groove Turning Holders P.10

Thread Turning Holders P.11





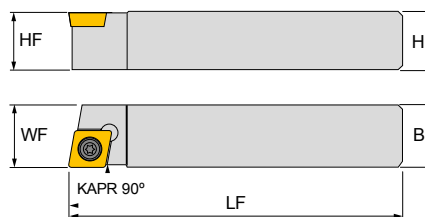
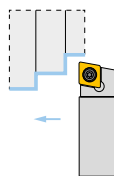
HOLDERS FOR AUTOMATIC LATHES

SCACR/L

For CC.. positive inserts



Right hand holder shown



Insert	
	CCGT 0602.. CCGT 09T3..
	CCMT 0602.. CCMT 09T3..

EDP Code	Description	H	HF	B	LF	WF	Insert Screw	Wrench
TTH0165	SCACR/L 0808 X06-S	8	8	8	115	8	TXS2506	TXW08
TTH0166	SCACR/L 1010 K06-S	10	10	10	125	10		
TTH0167	SCACR/L 1212 G06-S	12	12	12	90	12		
TTH0168	SCACR/L 1212 K06-S	12	12	12	125	12		
TTH0169	SCACR/L 1616 F06-S	16	16	16	75	16		
TTH0170	SCACR/L 1616 K06-S	16	16	16	125	16		
TTH0171	SCACR/L 1212 G09-S	12	12	12	90	12	TXS3511	TXW15
TTH0172	SCACR/L 1212 K09-S	12	12	12	125	12		
TTH0173	SCACR/L 1616 F09-S	16	16	16	75	16		
TTH0174	SCACR/L 1616 K09-S	16	16	16	125	16		
TTH0175	SCACR/L 2020 K09-S	20	20	20	125	20		

To order left hand add L to EDP code. Example: SCACL 0808 X06-S = TTH0165L



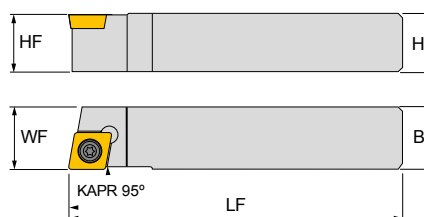
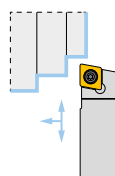
HOLDERS FOR AUTOMATIC LATHES

SCLCR/L

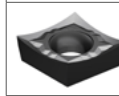
For CC.. positive inserts



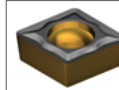
Right hand holder shown



Insert



CCGT 0602..
CCGT 09T3..



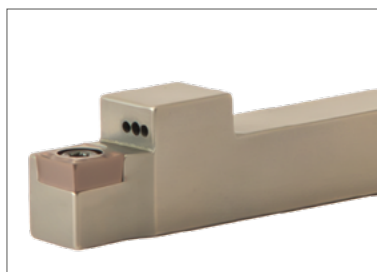
CCMT 0602..
CCMT 09T3..

EDP Code	Description	H	HF	B	LF	WF	Insert Screw	Wrench
TTH0176	SCLCR/L 0808 X06-S	8	8	8	115	8	TXS2506	TXW08
TTH0177	SCLCR/L 1010 X06-S	10	10	10	115	10		
TTH0178	SCLCR/L 1212 G06-S	12	12	12	90	12		
TTH0179	SCLCR/L 1212 K06-S	12	12	12	125	12		
TTH0180	SCLCR/L 1212 X06-S	12	12	12	130	12		
TTH0181	SCLCR/L 1616 F06-S	16	16	16	75	16		
TTH0182	SCLCR/L 1616 X06-S	16	16	16	130	16		
TTH0183	SCLCR/L 1212 G09-S	12	12	12	90	12	TXS3511	TXW15
TTH0184	SCLCR/L 1212 X09-S	12	12	12	130	12		
TTH0185	SCLCR/L 1616 F09-S	16	16	16	75	16		
TTH0186	SCLCR/L 1616 G09-S	16	16	16	90	16		
TTH0187	SCLCR/L 1616 X09-S	16	16	16	115	16		
TTH0188	SCLCR/L 2020 X09-S	20	20	20	120	20		

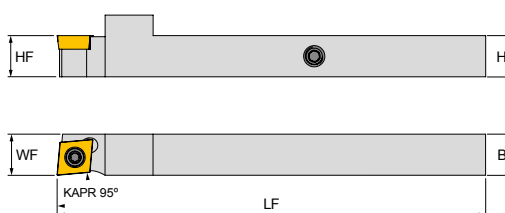
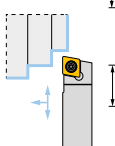
To order left hand add L to EDP code. Example: SCLCL 0808 X06-S = TTH0176L

SCLCR/L THROUGH COOLANT

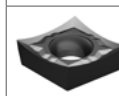
For CC.. positive inserts



Right hand holder shown



Insert



CCGT 09T3..



CCMT 09T3..

EDP Code	Description	H	HF	B	LF	WF	Set Screw	Insert Screw	Wrench
TTH0372	SCLCR/L 1212 K09-STC	12	12	12	125	12	HXS0604	TXS3511	TXW15
TTH0373	SCLCR/L 1616 K09-STC	16	16	16	125	16	HXS0805		

To order left hand add L to EDP code. Example: SCLCL 1212 K09-STC = TTH0372L

For coolant connection spares refer to page 12



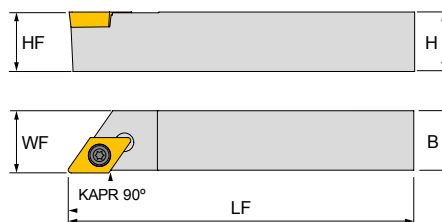
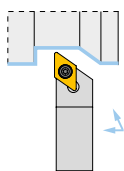
HOLDERS FOR AUTOMATIC LATHES


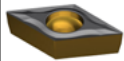
SDACR/L

For DC.. positive inserts



Right hand holder shown



Insert	
	DCGT 0702.. DCGT 11T3..
	DCMT 0702.. DCMT 11T3..

EDP Code	Description	H	HF	B	LF	WF	Insert Screw	Wrench
TTH0189	SDACR/L 0808 X07-S	8	8	8	115	8	TXS2506	TXW08
TTH0190	SDACR/L 1010 K07-S	10	10	10	125	10		
TTH0191	SDACR/L 1212 G07-S	12	12	12	90	12		
TTH0192	SDACR/L 1212 K07-S	12	12	12	125	12		
TTH0193	SDACR/L 1616 F07-S	16	16	16	75	16		
TTH0194	SDACR/L 1616 K07-S	16	16	16	125	16		
TTH0195	SDACR/L 1212 G11-S	12	12	12	90	12	TXS3511	TXW15
TTH0196	SDACR/L 1212 K11-S	12	12	12	125	12		
TTH0197	SDACR/L 1616 F11-S	16	16	16	75	16		
TTH0198	SDACR/L 1616 K11-S	16	16	16	125	16		
TTH0199	SDACR/L 2020 K11-S	20	20	20	125	20		

To order left hand add L to EDP code. Example: SDACL 0808 X07-S = TTH0189L



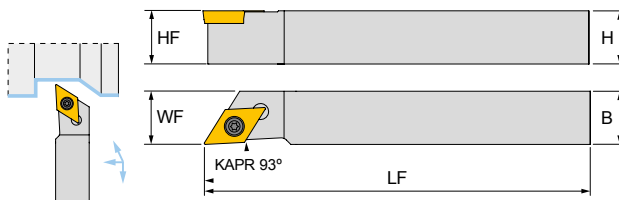
HOLDERS FOR AUTOMATIC LATHES

SDJCR/L

For DC.. positive inserts



Right hand holder shown



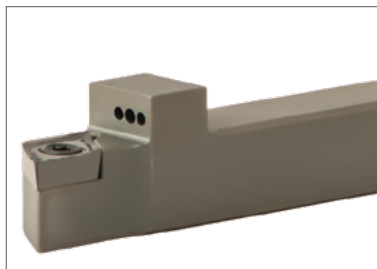
Insert	
	DCGT 0702.. DCMT 11T3..
	DCMT 0702.. DCMT 11T3..

EDP Code	Description	H	HF	B	LF	WF	Insert Screw	Wrench
TTH0200	SDJCR/L 0808 X07-S	8	8	8	115	8	TXS2506	TXW08
TTH0201	SDJCR/L 1010 X07-S	10	10	10	115	10		
TTH0202	SDJCR/L 1212 G07-S	12	12	12	90	12		
TTH0203	SDJCR/L 1212 X07-S	12	12	12	130	12		
TTH0204	SDJCR/L 1616 F07-S	16	16	16	75	12		
TTH0205	SDJCR/L 1616 X07-S	16	16	16	130	16		
TTH0206	SDJCR/L 2020 X07-S	20	20	20	120	20	TXS3511	TXW15
TTH0207	SDJCR/L 1212 G11-S	12	12	12	90	12		
TTH0208	SDJCR/L 1212 K11-S	12	12	12	125	12		
TTH0209	SDJCR/L 1212 X11-S	12	12	12	130	12		
TTH0210	SDJCR/L 1616 F11-S	16	16	16	75	16		
TTH0211	SDJCR/L 1616 K11-S	16	16	16	125	16		
TTH0212	SDJCR/L 1616 X11-S	16	16	16	130	16		
TTH0371	SDJCR/L 2020 X11-S	20	20	20	130	16		

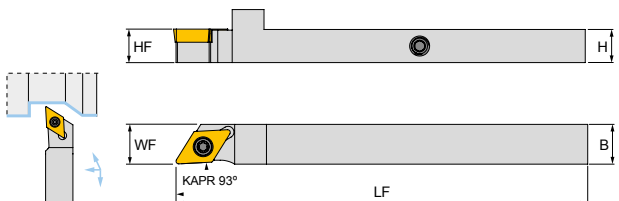
To order left hand add L to EDP code. Example: SDJCL 0808 X07-S = TTH0200L

SDJCR/L THROUGH COOLANT

For DC.. positive inserts



Right hand holder shown



Insert	
	DCGT 0702.. DCMT 11T3..
	DCMT 0702.. DCMT 11T3..

EDP Code	Description	H	HF	B	LF	WF	Set Screw	Insert Screw	Wrench
TTH0374	SDJCR/L 0810 G07-STC	8	8	10	90	10	HXS0604	TXS2506	TXW08
TTH0375	SDJCR/L 1010 K07-STC	10	10	10	125	10			
TTH0376	SDJCR/L 1012 K11-STC	10	12	12	125	12	HXS0805	TXS3511	TXW15
TTH0377	SDJCR/L 1212 K11-STC	12	12	12	125	12			
TTH0378	SDJCR/L 1616 K11-STC	16	16	16	125	16			

To order left hand add L to EDP code. Example: SDJCL 0810 G07-STC = TTH0374L

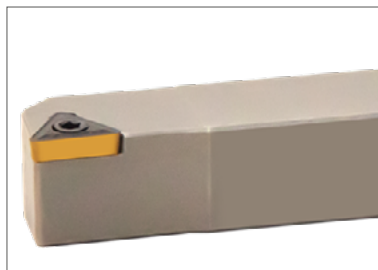
For coolant connection spares refer to page 12



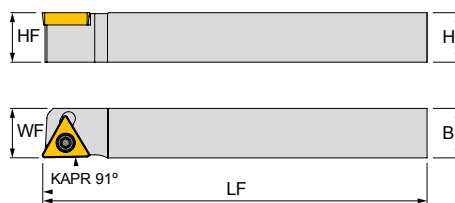
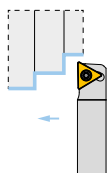
HOLDERS FOR AUTOMATIC LATHES

STGCR/L

For TC.. positive inserts



Right hand holder shown



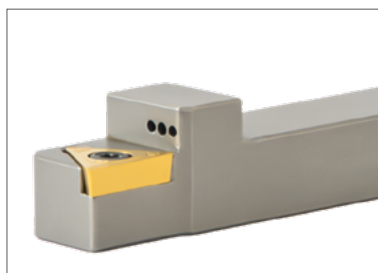
Insert	
	TCGT 1102.. TCMT 1102..
	TCGT 16T3.. TCMT 16T3..

EDP Code	Description	H	HF	B	LF	WF	Insert Screw	Wrench
TTH0214	STGCR/L 1216 K11-S	12	12	16	125	16	TXS2506	TXW08
TTH0215	STGCR/L 1616 K11-S	16	16	16	125	16		
TTH0216	STGCR/L 1216 K16-S	12	12	16	125	16	TXS3511	TXW15
TTH0217	STGCR/L 1616 K16-S	16	16	16	125	16		

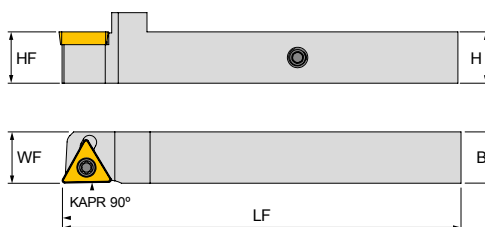
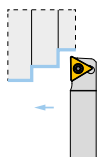
To order left hand add L to EDP code. Example: STGCL 1216 K11-S = TTH0214L

STGCR/L THROUGH COOLANT

For TC.. positive inserts



Right hand holder shown



Insert	
	TCGT 16T3..
	TCMT 16T3..

EDP Code	Description	H	HF	B	LF	WF	Set Screw	Shim	Shim Screw	Insert Screw	Wrench
TTH0379	STGCR/L 1216 K16-STC	12	12	16	125	16	HXS0604	HST16PA	HSAV35	TXS3514	TXW15
TTH0380	STGCR/L 1616 K16-STC	16	16	16	125	16	HXS0805				

To order left hand add L to EDP code. Example: STGCL 1216 K16-STC = TTH0379L

For coolant connection spares refer to page 12



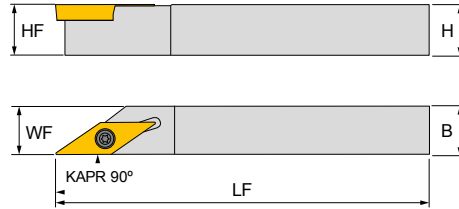
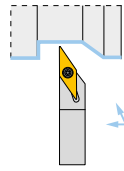
HOLDERS FOR AUTOMATIC LATHES

SVACR/L

For VC.. positive inserts



Right hand holder shown



Insert	
	VCMT 1103.. VCMT 1604..
	VCGT 1103.. VCGT 1604..

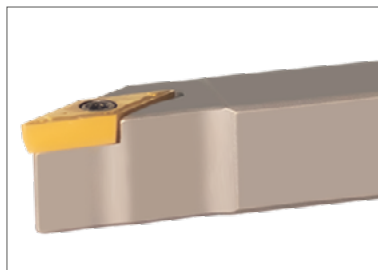
EDP Code	Description	H	HF	B	LF	WF	Insert Screw	Wrench
TTH0218	SVACR/L 0808 X11-S	8	8	8	115	8	TXS2506	TXW08
TTH0219	SVACR/L 1010 K11-S	10	10	10	125	10		
TTH0220	SVACR/L 1212 G11-S	12	12	12	90	12		
TTH0221	SVACR/L 1212 K11-S	12	12	12	125	12		
TTH0222	SVACR/L 1616 F11-S	16	16	16	75	16		
TTH0223	SVACR/L 1616 K11-S	16	16	16	125	16		
TTH0224	SVACR/L 2020 K11-S	20	20	20	125	20	TXS3511	TXW15
TTH0225	SVACR/L 1212 K16-S	12	12	12	125	12		
TTH0226	SVACR/L 1616 K16-S	16	16	16	125	16		

To order left hand add L to EDP code. Example: SVACL 0808 X11-S = TTH0218L

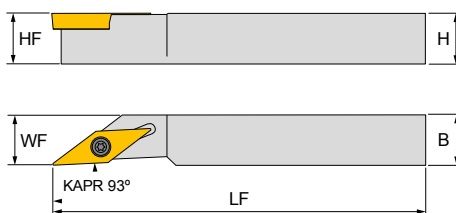
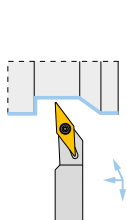
HOLDERS FOR AUTOMATIC LATHES

SVJCR/L

For VC.. positive inserts



Right hand holder shown



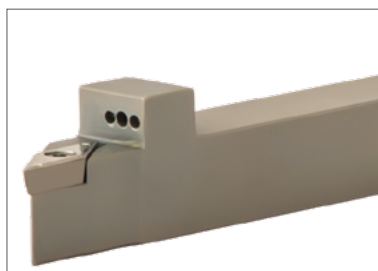
Insert	
	VCMT 1103..
	VCGT 1103..

EDP Code	Description	H	HF	B	LF	WF	Insert Screw	Wrench
TTH0227	SVJCR/L 0808 X11-S	8	8	8	115	8	TXS2506	TXW08
TTH0228	SVJCR/L 1010 K11-S	10	10	10	125	10		
TTH0229	SVJCR/L 1212 G11-S	12	12	12	90	12		
TTH0230	SVJCR/L 1212 K11-S	12	12	12	125	12		
TTH0231	SVJCR/L 1616 F11-S	16	16	16	75	16		
TTH0232	SVJCR/L 1616 K11-S	16	16	16	125	16		
TTH0233	SVJCR/L 2020 K11-S	20	20	20	125	20		

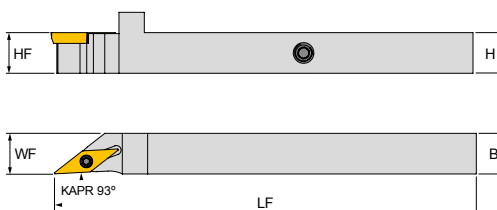
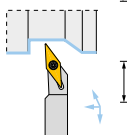
To order left hand add L to EDP code. Example: SVJCL 0808 X11-S = TTH0227L

SVJCR/L THROUGH COOLANT

For VC.. positive inserts



Right hand holder shown



Insert	
	VCMT 1103..
	VCGT 1103..

EDP Code	Description	H	HF	B	LF	WF	Set Screw	Insert Screw	Wrench
TTH0381	SVJCR/L 1212 K11-STC	12	12	12	125	12	HXS0604	TXS2506	TXW08
TTH0382	SVJCR/L 1616 K11-STC	16	16	16	125	16	HXS0805		

To order left hand add L to EDP code. Example: SVJCL 1212 K11-STC = TTH0381L

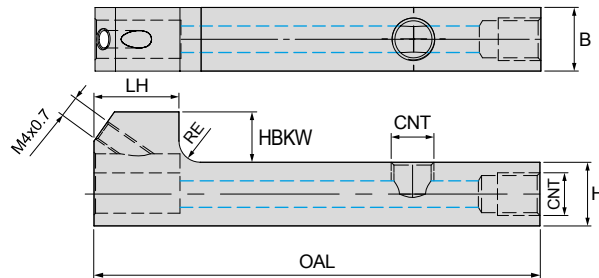
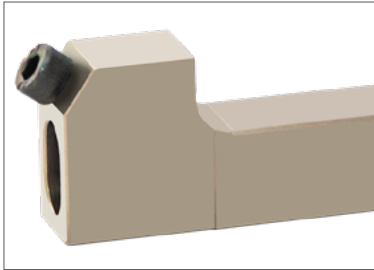
For coolant connection spares refer to page 12



EASY CHANGE HOLDERS FOR AUTOMATIC LATHES

MSTB-EC

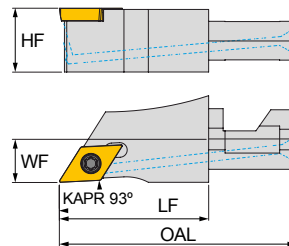
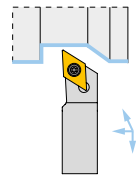
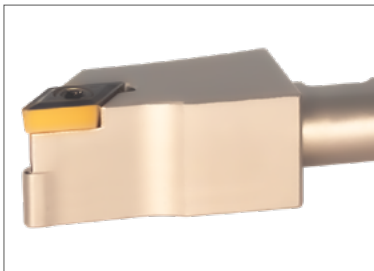
Through Coolant holder



EDP Code	Description	H	B	RE	HBKW	LH	OAL	CNT	Screw	Set Screw
TTH0234	MSTB 1212-EC	12	12	4	9.5	16	84	M8 x 1.0	M4X12IMC	HXS0805
TTH0235	MSTB 1616-EC	16	16	1	5.5	16	90			

SDJCR/L-EC

For DC.. positive inserts



Insert	
	DCGT 0702.. DCGT 11T3..
	DCMT 0702.. DCMT 11T3..

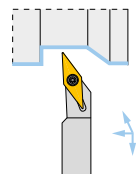
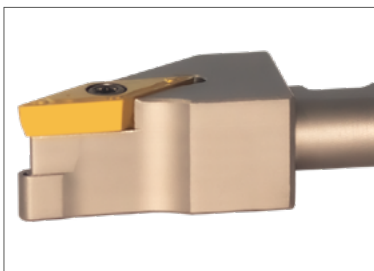
Repeatability ±0.01mm. Right hand holder shown

EDP Code	Description	HF	WF	LF	OAL	Insert Screw	Wrench
TTH0236	SDJCR/L 12-07-EC	11.8	8	27.3	43.3	TXS2506	TXW08
TTH0237	SDJCR/L 16-07-EC	15.8	8	27.3	43.3		
TTH0238	SDJCR/L 12-11-EC	11.8	8	27.3	43.3	TXS3511	TXW15
TTH0239	SDJCR/L 16-11-EC	15.8	8	27.3	43.3		

To order left hand add L to EDP code. Example: SDJCL 12-07-TC = TTH0236L

SVJCR/L-EC

For VC.. positive inserts



Insert	
	VCGT 1103..
	VCMT 1103..

Repeatability ±0.01mm. Right hand holder shown

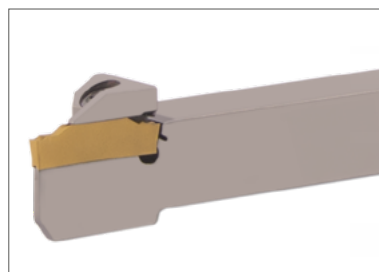
EDP Code	Description	HF	WF	LF	OAL	Insert Screw	Wrench
TTH0240	SVJCR/L 12-11-EC	11.8	8	27.3	43.3	TXS2506	TXW08
TTH0241	SVJCR/L 16-11-EC	15.8	8	27.3	43.3		

To order left hand add L to EDP code. Example: SVJCL 12-11-TC = TTH0240L

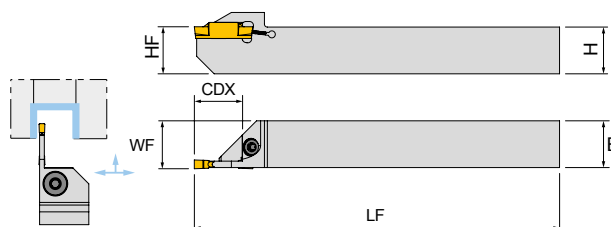


HOLDERS FOR AUTOMATIC LATHES

GTER/L-S



Right hand holder shown



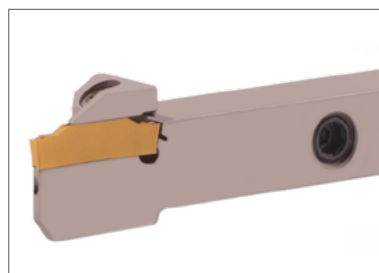
Insert	
	TDP 2, 3
	TDN 2, 3
	TDY 2, 3

EDP Code	Description	CW	CDX	H	HF	B	LF	WF	Screw	Wrench
PGH0098	GTER 1010-2S	2.0	10.0	10	10	10	125	10.2	TXS4011	TXW15
PGH0099	GTER 1212-2S	2.0	12.0	12	12	12	125	12.2		
PGH0100	GTER 1616-2S	2.0	16.0	16	16	16	125	16.2		
PGH0101	GTER 1212-3S	3.0	12.0	12	12	12	125	12.3	TXS4011	TXW15
PGH0041	GTER 1616-3S	3.0	16.0	16	16	16	125	16.3		

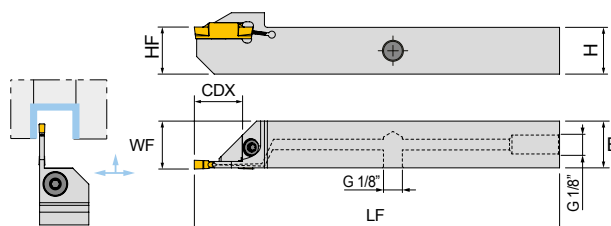
To order left hand add L to EDP code. Example: GTEL 1010-2S = PGH0098L

HOLDERS FOR AUTOMATIC LATHES - THROUGH COOLANT

GTER/L-S-TC



Right hand holder shown



Insert	
	TDP 2, 3
	TDN 2, 3
	TDY 2, 3

EDP Code	Description	CW	CDX	H	HF	B	LF	WF	Set Screw	Screw	Wrench
PGH0042	GTER 1212-2S-TC	2.0	12.0	12	12	12	125	12.2	HXS1855	TXS4011	TXW15
PGH0044	GTER 1616-2S-TC	2.0	16.0	16	16	16	125	16.2			
PGH0043	GTER 1212-3S-TC	3.0	12.0	12	12	12	125	12.3	HXS1855	TXS4011	TXW15
PGH0045	GTER 1616-3S-TC	3.0	16.0	16	16	16	125	16.3			

To order left hand add L to EDP code. Example: GTEL 1212-2S-TC = PGH0042L

For coolant connection spares refer to page 12



EXTERNAL HOLDERS FOR AUTOMATIC LATHES

SER/L

Insert

11ER/L
16ER/L

Right hand holder shown

EDP Code	Description	H	HF	B	LF	WF	Insert	Right Shim	Left Shim	Shim Screw	Washer	Insert Screw	Wrench
THH0022	SER/L 1010 K11-S	10	10	10	125	10	11ER/L	-	-	-	-	TXS2506	TXW08
THH0023	SER/L 1212 K11-S	12	12	12	125	12		-	-	-	-	TXS3514	TXW15
THH0034	SER/L 1212 K16-S	12	12	12	125	12	16ER/L	HTS16RL	HSAV35.1	-	-	TXS3514	TXW15

To order left hand add L to EDP code. Example: SEL 1010 K11-S = THH0022L

EASY CHANGE HOLDERS FOR AUTOMATIC LATHES

SER/L

Insert

11ER/L

Repeatability ±0.01mm. Right hand holder shown

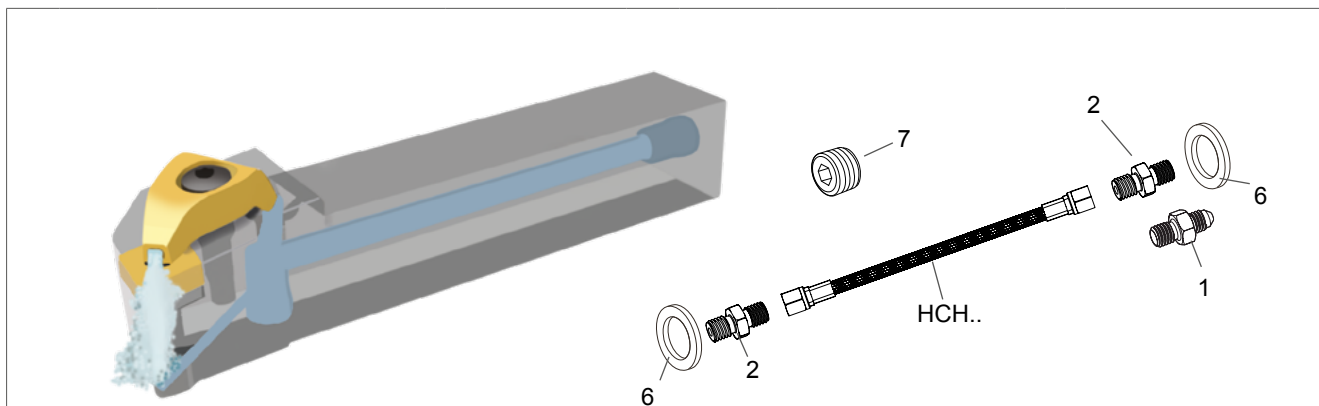
EDP Code	Description	HF	WF	LF	OAL	Insert	Insert Screw	Wrench
THH0014	SER/L 12-11	11.8	8	27.3	43.3	11ER/L	TXS2506	TXW08
THH0015	SER/L 16-11	15.8	8	27.3	43.3			

To order left hand add L to EDP code. Example: SEL 12-11 = THH0014L

For tool block refer to page 9



COOLANT CONNECTION SPARES



Three types of coolant hose are available to suit all types of internally cooled lathes. Before use, care should be taken to ensure that all unused connections are closed off using the blanking plug and that the seal is secure. Coolant hoses are designed for use in the pressure range of 10 bar to 275 bar.

Item	EDP Code	Description	Image	Item	EDP Code	Description	Image
1	HCF01	DOUBLE CONNECTOR M10		6	HCG01	COPPER GASKET	
2	HCF02	DOUBLE CONNECTOR G1/8		7	HXS1855	BLANKING PLUG G1/8	
3	HCF03	ANGLE CONNECTOR G1/8		8	HCH01	CONNECTION HOSE TYPE 1	
4	HCF04	ANGLE CONNECTOR M10		9	HCH02	CONNECTION HOSE TYPE 2	
5	HCF05	G1/4-G1/8 REDUCER		10	HCH03	CONNECTION HOSE TYPE 3	